

CNC Controlling System

Drive Solution

Smart Machine Function

Automation Cell Solution



**SYNTEC**

**WOODWORKING CONTROLLER**

---

Trusted technical service

---



## Profile

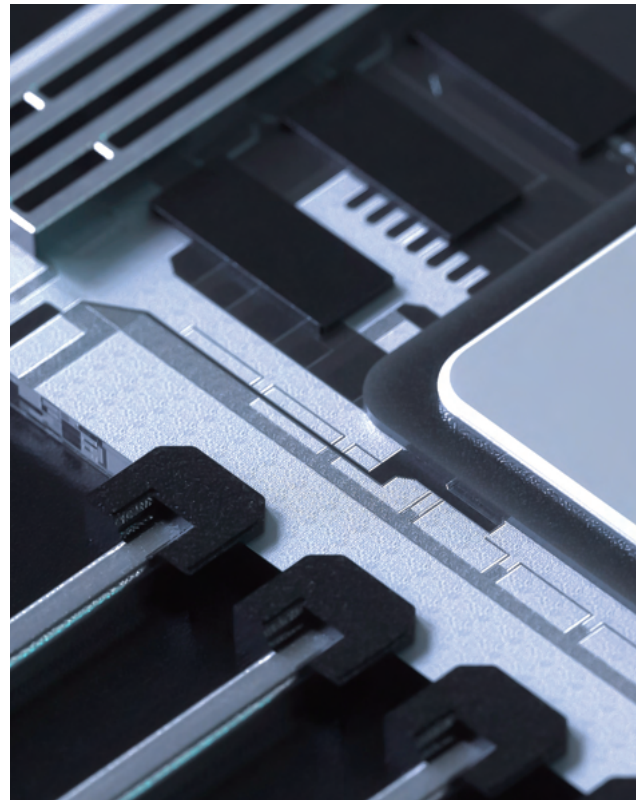
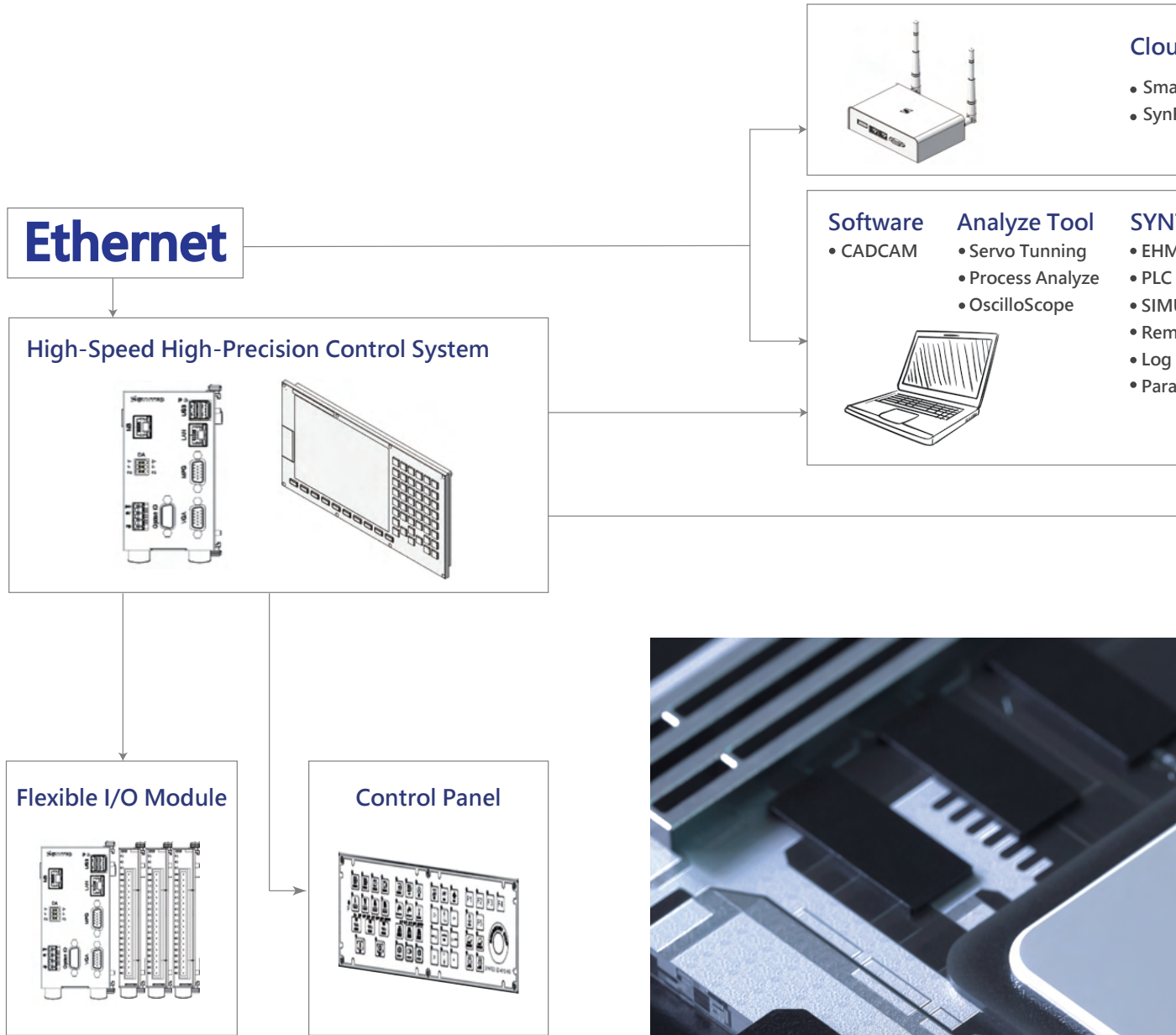
### About Syntec

SYNTEC has been devoted to the machine tool industry with 100% owned controller technologies cultivated to be innovated in both hardware and software. In addition to the well known reputation in machine tool controllers, SYNTEC extended our businesses to servo products, drive, motors, and encoder in order to provide not only higher servo products performance but also one-stop solution service of a tool machine. SYNTEC has earned our customer trust by comprehensive after-sales service and has become one of the most influential and development potential brands in the Asia-Pacific market. SYNTEC now is taking "Industry 4.0" as the main goal of technological development.



_____	
Total Solution for Woodworking Machine	<u>01</u>
Woodworking Controller	<u>03</u>
Servo Drive/Motor	<u>05</u>
Practical controller platform features	<u>11</u>
Smart Machine	<u>13</u>
Flexible Manufacturing Cell	<u>15</u>
Five-Axes Control	<u>16</u>
Controller Model Spec	<u>17</u>

# 01 Total Solution for Woodworking Machine



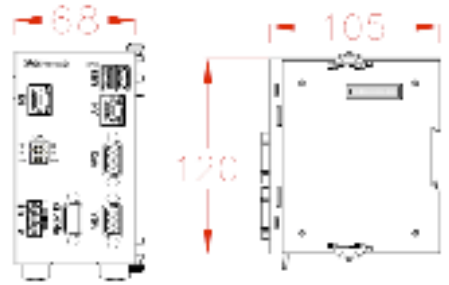


# Woodworking Controller

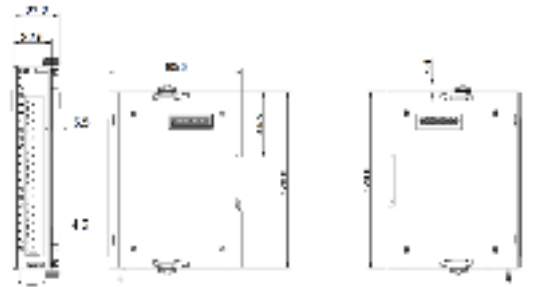
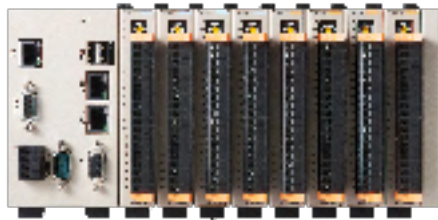
## FC Controller



- Narrow size = 68/ Wide size = 97.5



## Flexible I/O Module



●~Standard ▲~Optional --~Not Available

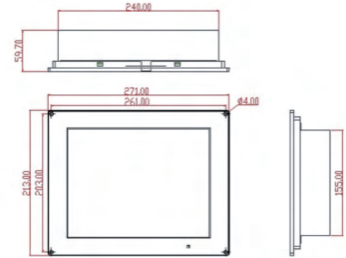
Length Unit : mm

Model	63WA	630WA	60WB	600WB	60CB	60PA	60CA
Size Version	Wide	Wide	Wide	Wide	Narrow	Narrow	Narrow
Standard Axes(Optional)	4(6)	7(18)	4(6)	7(18)	4(5)	3(18)	4
DA	2	2	2	2	2	2	-
Monitor	VGA	VGA	VGA	VGA	VGA	VGA	VGA
Disk / DiskA	8G/4G	8G/4G	4G/4G	4G/4G	256M/4G	256M/4G	256M/4G
4Axes RTCP / 5Axes RTCP	▲/-	▲/-	▲/-	▲/-	-	-	-
Tool Length/Radius Comp	●/-	●/●	●/-	●/●	●/-	-/-	●/-
Woodworking CAD/CAM	▲	▲	▲(PC only)	▲(PC only)	-	-	-
PC-CNC App / VNC Server	●/●	●/●	●/-	●/-	●/-	●/-	▲/-
Controller Remote Support	●	●	-	-	-	-	-
Database ( RestfulAPI )	▲	▲	-	-	-	-	-
Servo Protocol	Mechatrolink III / EtherCAT			Pulse			
IO	SRI Flexible I/O Module						

60PE



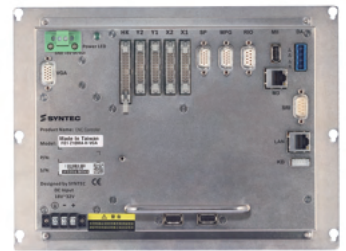
10"  
Touch Panel



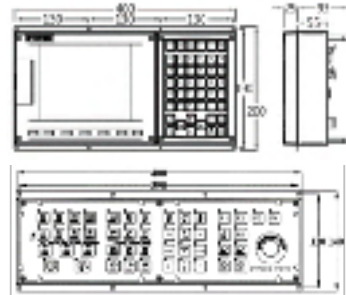
610-E5



Back-End  
10" /15"  
Standard



60W-E



●~Standard ▲~Optional --~Not Available

Length Unit : mm

Model	60W-E	60PE	610MA-E5
Standard Axes(Optional)	4(6)	4(18)	8(18)
DA	2	2	2
Monitor	8"	10"	10" /15" /VGA
DiskC / DiskA	256M / 4G	4G / 4G	4G / 4G
4Axes RTCP / 5Axes RTCP	▲/-	-	●/▲
Woodworking CAD/CAM	-	-	-
PC-CNC App / VNC Server	●/-	●/-	●/-
Database ( RestfulAPI )	-	-	-
Servo Protocol	Mechatrolink III / EtherCAT		
IO	32/32	32/32	32/32

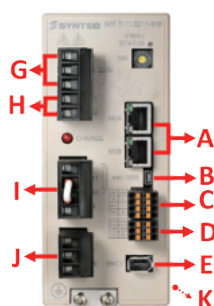
# Servo Drive/Motor

## Spec of Drive

Product	Type	PWR	SPEC	Rater/MaxCurrent	Protocol
Single-Axis Drive					
1KW (sizeA)	SVD-22C1-010	220V	1KW	7.6A/14.1A	M3
Mini Multi-Axes Drive					
SMD-30/30/30/30-XS	SMD24C20-00	220V	Axis:1/1/1/1	Axis:7.6A/14.1A	M3
SMD-30/30/30-XS	SMD23C20-00	220V	Axis:1/1/1	Axis:7.6A/14.1A	M3
SMD-30/30-XS	SMD22C20-00	220V	Axis:1/1	Axis:7.6A/14.1A	M3

## Servo Interface Definition

- Single-Axis Drive

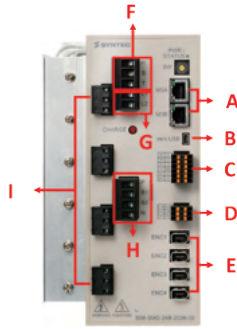


A	Serial Communication Port	Connect to host controller Serial Communication 100Mbps
B	Mini USB端口	Connect to personal computer
C	I/O Signal Port External battery Port	Connect to I/O equipment(emergency stop, indicator lights, etc.) connect to the battery of the absolute encoder
D	STO Signal Port	STO interface, 2 sets of safety inputs, 1 set of safety feedback
E	Encoder Feedback	Connect to motor encoder
G	External Power Supply	Connect to 3-phase electrical power 220V(RST)
H	Control Power	If there are safety requirements, the controlled source can be independently supplied from L1 & L2 and connect to single-phase AC 220V. The input voltage must be the same as RST.
I	Regenerative Resistor	Two connection methods of SIZEA, SIZEB, optional: (a) Connect the external regenerative resistor to P & B2. (b) The built-in brake is to short circuit B1 and B2SIZE D: external regenerate resistor connects to P and B
J	Machine Power Supply	Connect to motor and supply power. (UVW)
K	Expansion Module Connector	Expansion Module Connector



## Servo Interface Definition

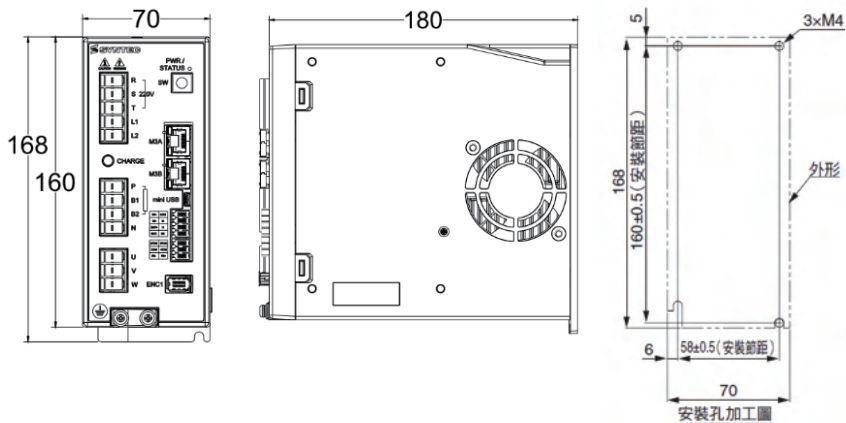
- MINI Multi-Axes Drive



A	Serial Communication Port	Connect to host controller Serial Communication 100Mbps
B	Mini USB	Connect to personal computer
C	I/O Signal Port External battery Port	Connect to I/O equipment(emergency sop, indicator lights, etc.) connect to the battery of the absolute encoder
D	STO Signal Port	STO interface, 2 sets of safety inputs, 1 set of safety feedback
E	Encoder Feedback	From top to bottom are the 1st port to the 4th connecting to motor encoders.
F	External Power Supply	Connect to 3-phase electrical power 220V(RST)
G	Control Power	If there are safety requirements, the controlled source can be independently supplied from L1 & L2 and connect to single-phase AC 220V. The input voltage must be the same as RST.
H	Regenerative Resistor	Two connection methods of SIZEA, SIZEB, optional: (a) Connect the external regenerative resistor to P & B2. (b) The built-in brake is to short circuit B1 and B2SIZE D: external regenerate resistor connects to P and B
I	Machine Power Supply	Connect to motor and supply power. (UVW)

## Size ( Unit : mm )

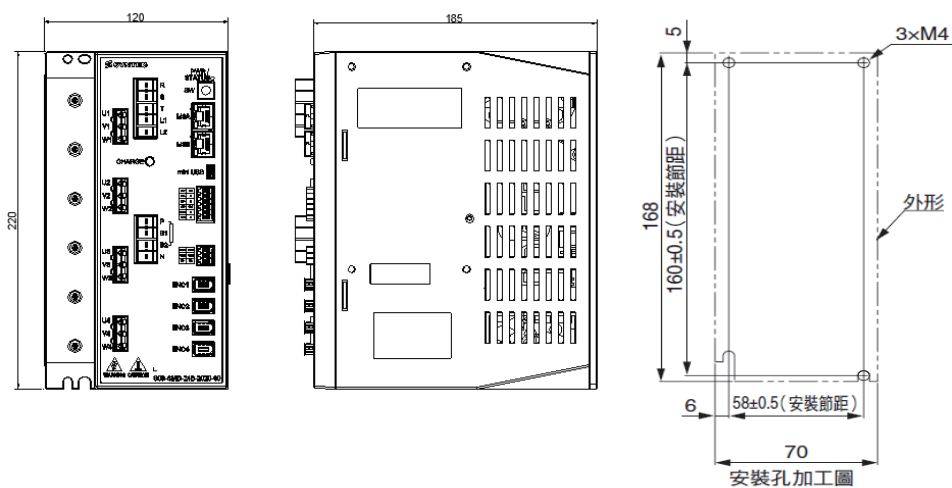
- Single-Axis Drive



# Servo Drive/Motor

Size ( Unit : mm )

- MINI Multi-Axes Drive

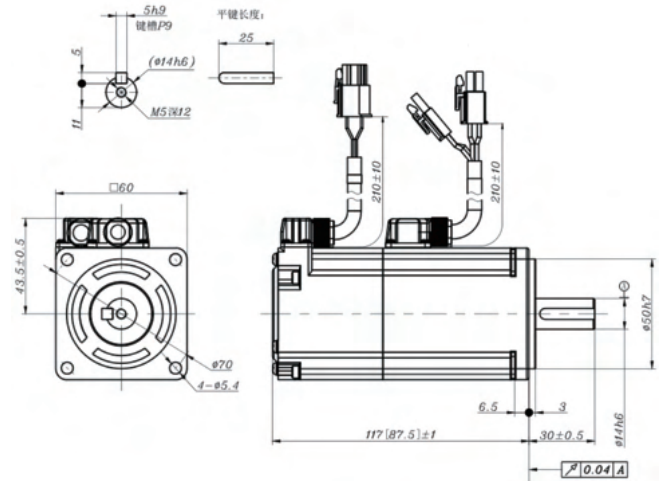


## Motor

Item	SPEC					Model	選配件	
	Type	Rated Torque (N.m)	Power (KW)	Rated/Max. Speed (rpm)	IP Rating		Keyway	Brake+Keyway
1	AM1	1.27	0.4	3000/5000	IP65	S08-AM1-50□-H2	√	√
2	AM2	2.39	0.75	3000/5000	IP65	S08-AM2-50□-H2	√	√
3	AM4	4.7	1.0	2000/4000	IP67	S08-AM4-40□-H3	√	√
4	AM7	7.2	1.5	2000/2500	IP67	S08-AM7-25□-H2	√	√
5	AM7	7.12	1.5	2000/3000	IP67	S08-AM7-30□-H3	√	√
6	AM9	9.5	2.0	2000/3000	IP67	S08-AM9-30□-H3	√	√

Axial Motor Spec

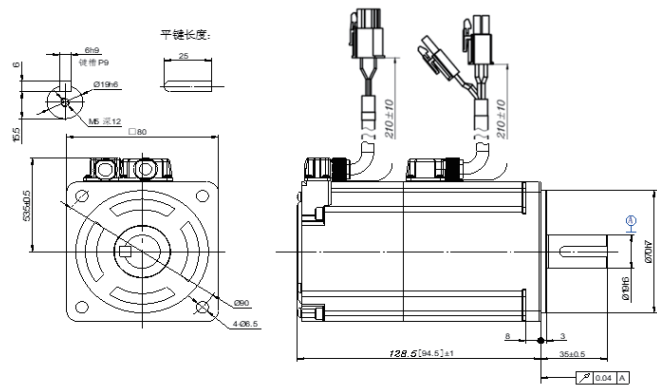
S08-AM1-50□-H2



Flange(mm)	Model	Power(KW)	Lehgh(mm)	Shaft Diameter(mm)	Shaft Spec ( mm )				
					60	AM1	0.4	87.5(117)	14
					Keyway Depth	3	Threaded hole	M5×10	

Hint : “( )” means with

S08-AM2-50□-H2



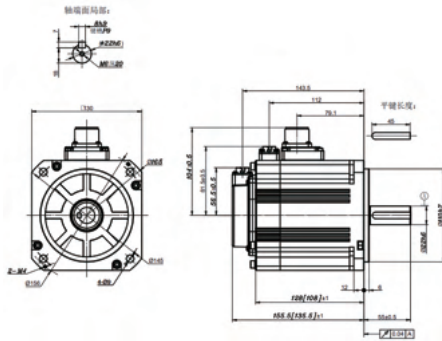
Flange(mm)	Model	Power(KW)	Lehgh(mm)	Shaft Diameter(mm)	Shaft Spec ( mm )				
					80	AM2	0.75	94.5(128.5)	19
					Keyway Depth	3	Threaded hole	M5×10	

Hint : “( )” means with

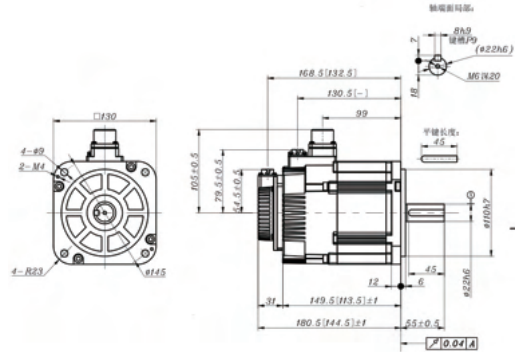
# Servo Drive/Motor

Size ( Unit : mm )

## S08-AM4-40□-H3



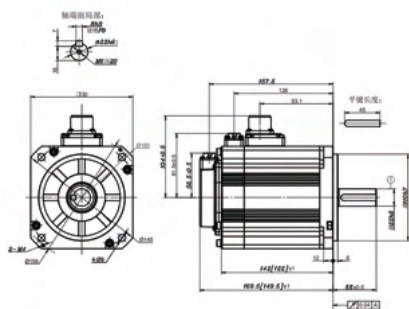
## S08-AM7-25□-H2



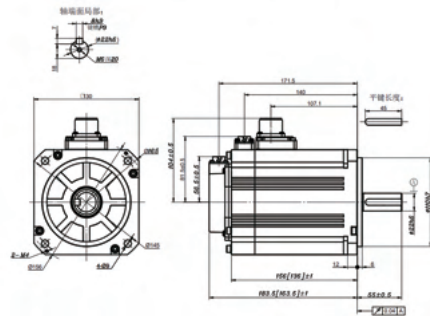
Flange(mm)	Model	Power(KW)	Lehgth(mm)	Shaft Diameter(mm)	Shaft Spec ( mm )			
130	AM1	1.0	135.5(155.5)	22	Keyway Wiidth	8h9	Keyway Length	45
					Keyway Depth	3	Threaded hole	M6×20
Flange(mm)	Model	Power(KW)	Lehgth(mm)	Shaft Diameter(mm)	Shaft Spec ( mm )			
130	AM7-25	1.5	144.5(180.5)	22	Keyway Wiidth	8h9	Keyway Length	45
					Keyway Depth	3	Threaded hole	M6×20

Hint : “( )” means with

## S08-AM7-30□-H3



## S08-AM9-30□-H3



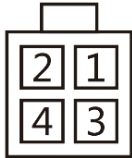
Flange(mm)	Model	Power(KW)	Lehgth(mm)	Shaft Diameter(mm)	Shaft Spec ( mm )			
130	AM7-30	1.5	149.5(169.5)	22	Keyway Wiidth	8h9	Keyway Length	45
					Keyway Depth	3	Threaded hole	M6×20
Flange(mm)	Model	Power(KW)	Lehgth(mm)	Shaft Diameter(mm)	Shaft Spec ( mm )			
130	AM9	2.0	163.5(183.5)	22	Keyway Wiidth	8h9	Keyway Length	45
					Keyway Depth	3	Threaded hole	M6×20

Hint : “( )” means with

Axial Motor Cable Connector Definition

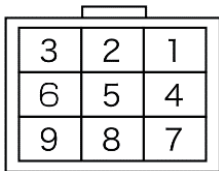
S08-AM1-50□-H2 · S08-AM2-50□-H2

- Power Connector :



Tag	1	2	3	4
Def.	U	V	W	PG

- Encoder Connector :

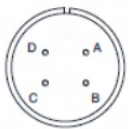


Tag	1	2	3	4	5
Def.	BAT+	-	SHIELD	SD+	SD-
Tag	6	7	8	9	
Def.	-	Vcc	GND	-	

S08-AM4-40□-H3 · S08-AM7-25□-H2

S08-AM7-30□-H3 · S08-AM9-30□-H3

- Power Connector :



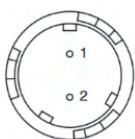
Tag	A	B	C	D
Def.	U	V	W	PG

- Encoder Connector :



Tag	1	2	3	4	5
Def.	Data+	Data-	空	5V	BAT-
Tag	6	7	8	9	10
Def.	BAT+	空	空	0V	PG

- Brake Connector



Tag	1	2
Def.	24V	0V

# Practical controller platform features

## Breakpoint Return Function

Convenient operation, simple and easy to learn. Smart breakpoint line number selection, ensuring accurate breakpoint coordinates.



## IO Mapping

Function of setting physical IO points based on PLC IO points.

SRI-2-1-1	注解	DI		
0	主軸氣缸1	100	16	N/A
1	主軸氣缸2	101	17	N/A
2	主軸氣缸3	102	18	N/A
3	主軸氣缸4	103	19	N/A
4	吸塵氣缸	104	20	N/A
5	主軸旋轉	105	21	N/A
6	主軸停止	106	22	N/A
7	主軸毛刷	107	23	N/A
8	真空泵1	108	24	N/A
9	燈面吸附	109	25	N/A
10	燈面吸附	110	26	N/A
11	鑽排氣缸	111	27	N/A
12	排站氣缸	112	28	N/A
13	上料氣缸	113	29	N/A
14	推料氣缸	114	30	N/A
15	刀庫旋轉	115	31	N/A

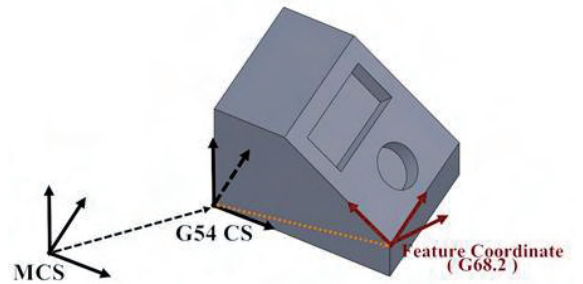
## Tool Life Management

Completed functions including tool life count (time and count), tool life count of multi-group path, tool group, life-end alarm setting, tool-in-formations arrangement..etc.

刀號	群組	刀具管理	當前計次	當前距離	預期壽命	最大壽命	剩餘壽命	刀具狀態 (剩餘量)
1	1	計次	0	0.000	19	20	20	可使用
2	1	計距離	0	0.100	1.900	2.000	1.900	可使用
3	2	計次	3	0.000	5	6	3	可使用
4	2	計距離	0	0.000	0.900	1.000	0.200	可使用
5	5	未管理	0	0.000	0	0	N/A	未管理
6	6	未管理	0	0.000	0	0	N/A	未管理
7	7	未管理	0	0.000	0	0	N/A	未管理
8	8	未管理	0	0.000	0	0	N/A	未管理
9	9	未管理	0	0.000	0	0	N/A	未管理
10	10	未管理	0	0.000	0	0	N/A	未管理
11	11	未管理	0	0.000	0	0	N/A	未管理
12	12	未管理	0	0.000	0	0	N/A	未管理

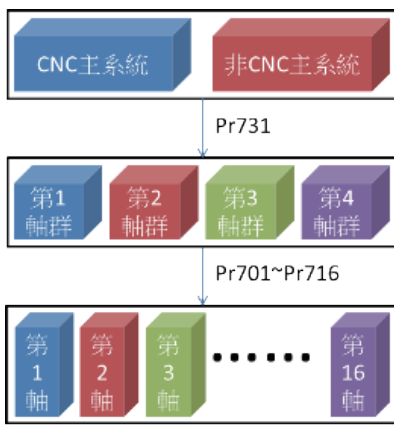
## Feature Coordinate

- Intuitive of program NC by rotary absolute coordinate.
- Easy to program NC without using complex CAD/CAM processing.



### Multi-channel / Axes Group

PLC signal control interface, axis group status, alarm management, and processing information are completely independent.



### Gantry Correlation

- rapid correction when positional error between two axes of the gantry
- Support up to four sets of gantry mechanisms.



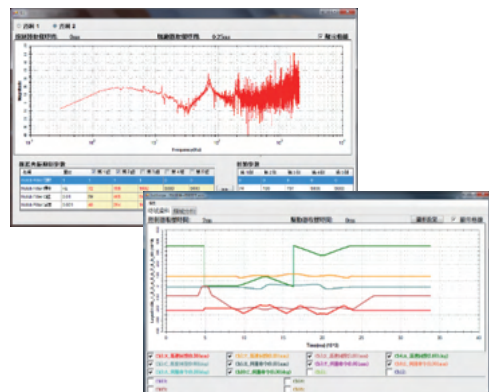
### One-click Tuning

Simplified servo tuning procedure; automatic servo tuning for optimal servo parameters by pressing a single key



### Analysis Platform

Provides data analysis functions for fast troubleshooting of processing problems.



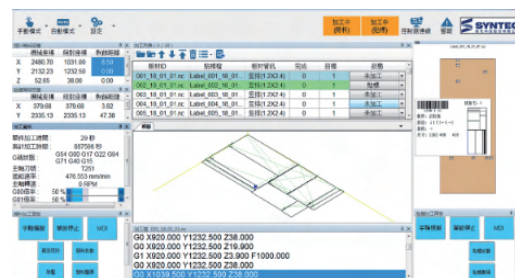
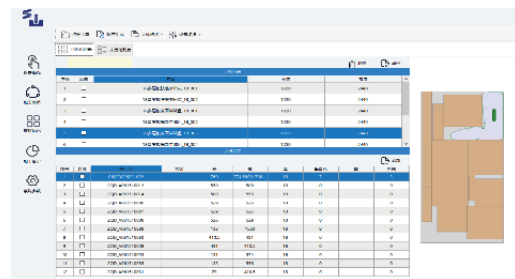
## Router/Labeling Machine

- Auto-Label, WorkingList
- Support ZPL Printer
- CAD/CAM, Nesting
- Optimized cutting path



According to the actual production scenarios of customers, we provide flexible configurations and optimized applications.

- Cutting Saw Optimization
- MES data Integration
- On-site panel redo and nesting





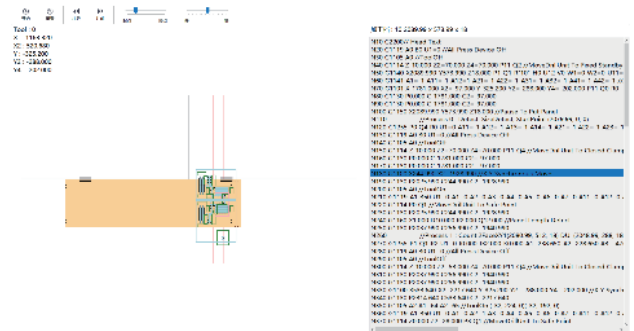
## 6-Side Drill

User-friendly high-performance CAD/CAM



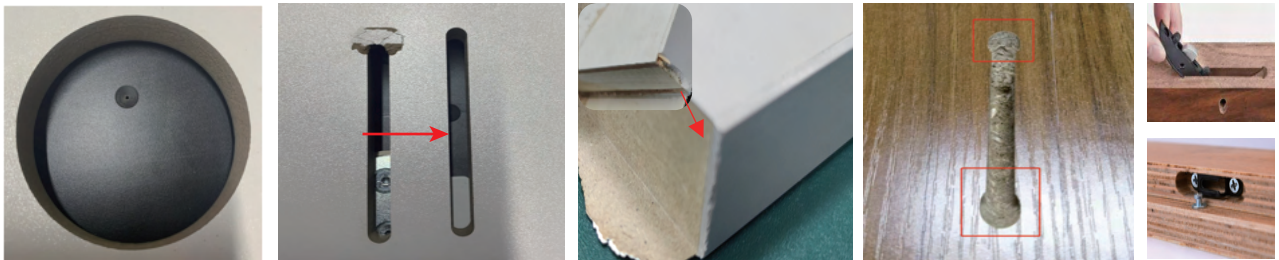
## Visualization of Mechanism Parameters and Process Simulation

- Open, Scalable
- High-speed, High-precision
- Decades of motion control technology Support
- international data format standards, rapid deployment. (mpr, xml, xml...)



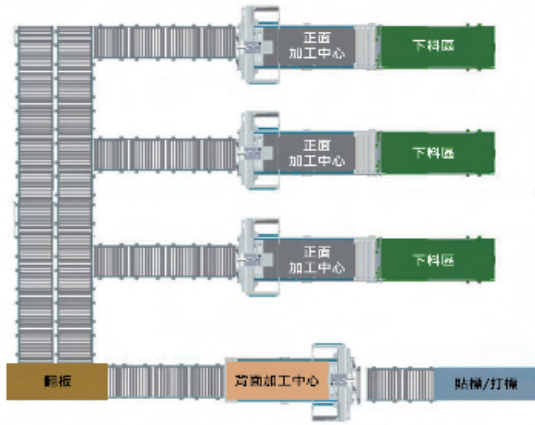
## High-Performance, High-Quality

- High-precision path decisions to
- eliminate surface skinning,
- Prevent edge banding from bursting.
- Ensure the quality of finished products.

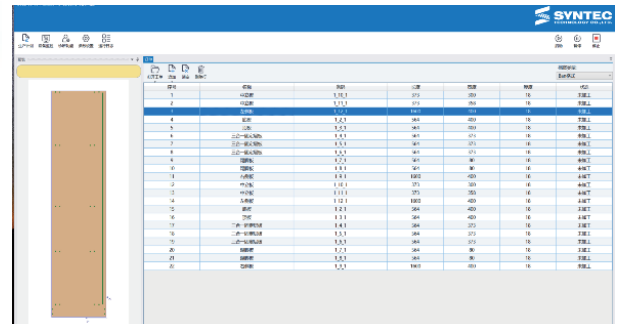
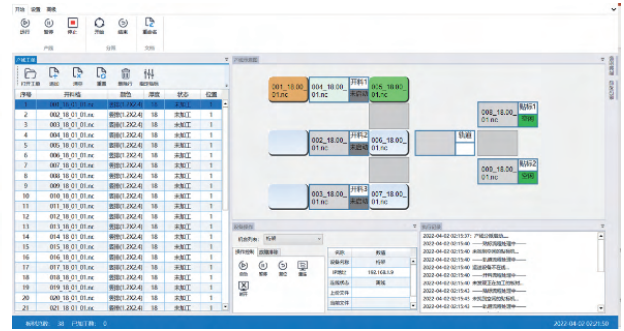


# Flexible Manufacturing Cell

## Central Control



中控



- PC Software integrates Monitor/Data
- Connection/Manufacturing optimization in one station

## Open Data/Remote Support

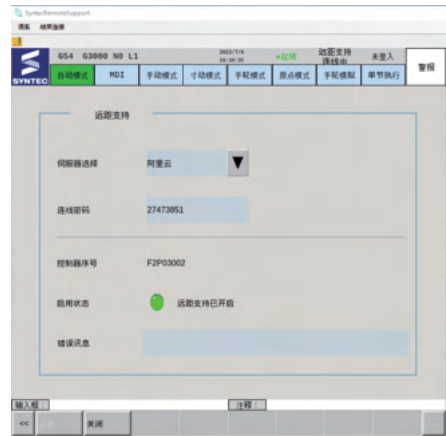
- Real-time
- Process info.
- Tool info.

MES/ERP

RESTful API



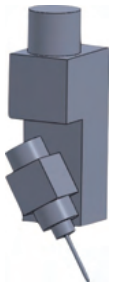
Built-in DataBase



SyntecRemoteSupport Tool

# Five-Axes Control

Support Several types correction



Tool Rotation

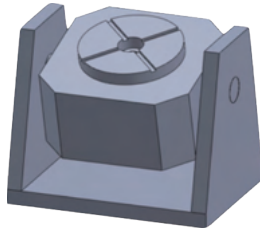
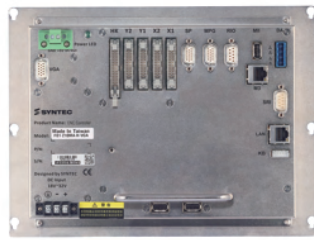


Table Rotatio



Composite

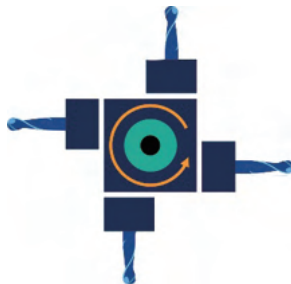


## Complete Hardware

- Back-End 10" / 15" Standard Panel / Touch Panel
- Suited for all manipulation demand

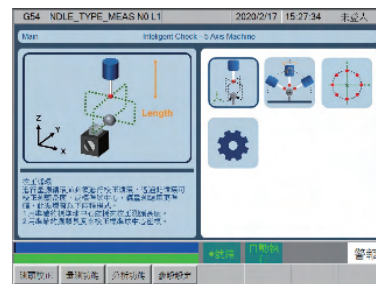


## Rotation Tool Center Point Control (RTCP)



## Support Multi-Chain RTCP

- Cross-Type Multi-Head Spindle



## Machine Tool Measurement

- SYNTEC / HEXAGON / ISHIN

# Controller Model Spec

		O~Standard    Δ~Optional    --~Not Available			
Class	Item	FC-63WA	FC-630WA	*FC-60WB	*FC-600WB
Servo	Protocol	M3/EtherCAT	M3/EtherCAT	M3/EtherCAT	M3/EtherCAT
Software	Standard Axes(Optional)	4(6)	7(18)	4(6)	7(18)
	Max. Axes Group	4	4	4	4
	Max. Spindle	4	10	4	10
	Tool / Coordinate Number	200/100	200/100	200/100	200/100
	BPT	1000	3000	1000	3000
Hardware	RJ-45	1	1	1	1
	RS-485	1	1	1	1
	USB	2	2	2	2
	I/O	SRI	SRI	SRI	SRI
	DA/MPG	2/1	2/1	2/1	2/1
	Monotor	VGA	VGA	VGA	VGA
	DiskC/DiskA	8G/4G	8G/4G	4G/4G	4G/4G
Function Optional	OP5-PC-CNC	O	O	O	O
	OP12-RTCP	-	-	-	-
	OP16-SYNTEC Vision	Δ	Δ	Δ	Δ
	OP27-Multi-5-Axes Chain	-	-	-	-
	OP29-4Axes RTCP	Δ	Δ	Δ	Δ
	OP30-5Axes	O	O	O	O
	OP32-ROT	O	O	O	O
	OP36-CADCAM	Δ	Δ	Δ	Δ
	OP37-WoodAux	Δ	Δ	Δ	Δ
	OP43-LabelCutFunction	Δ	Δ	Δ	Δ
	OP51-OPCUA	Δ	Δ	Δ	Δ

		O~Standard   Δ~Optional   ~~Not Available			
Class	Item	FC-63WA	FC-630WA	*FC-60WB	*FC-600WB
Servo	Protocal	M3/EtherCAT	M3/EtherCAT	M3/EtherCAT	M3/EtherCAT
Function Optional	OP57-WoodCentral	Δ	Δ	Δ	Δ
	OP59-Tangential Control	Δ	Δ	Δ	Δ
	OP60- DataBase	Δ	Δ	-	-
	PLC / PTP Axes	O/-	O	O/-	O
	Multi-Main System Group	O	O	O	O
	Tool Length/Diad. Comp.	O/-	O	O/-	O
	VNC server	O	O	-	-
	Remote Support	O	O	-	-
	ZPL printer	O	O	O	O
	Panel Redo/Nest	O	O	-	-

# Controller Model Spec

	O~Standard   Δ~Optional   --~Not Available					
Class	Item	FC-60PA	*FC-60CA	*FC-60CB	FC-60WA	FC-600WA
Servo	Protocol	M3/EtherCAT	Pulse	M3/EtherCAT	M3/EtherCAT	M3/EtherCAT
Software	Standard Axes(Optional)	3(18)	4	4(5)	7	9(18)
	Max. Axes Group	2	4	4	4	4
	Max. Spindle	2	4	4	4	4
	Tool / Coordinate Number	-/32	32/32	96/32	96/100	200/100
	BPT	600	600	600	1000	3000
Hardware	RJ-45	1	1	1	1	1
	RS-485	1	1	1	1	1
	USB	2	2	2	2	2
	I/O	SRI	SRI	SRI	SRI	SRI
	DA/MPG	2/1	-/1	2/1	2/1	2/1
	Monotor	VGA	VGA	VGA	VGA	VGA
	DiskC/DiskA	256M/4G	256M/4G	256M/4G	256M/4G	4G/4G
Function Optional	OP5-PC-CNC	O	Δ	O	O	O
	OP12-RTCP	-	-	-	-	-
	OP16-SYNTEC Vision	Δ	Δ	Δ	Δ	Δ
	OP27-Multi-5-Axes Chain	-	-	-	-	-
	OP29-4Axes RTCP	-	-	-	Δ	Δ
	OP30-5Axes	-	-	-	-	O
	OP32-ROT	-	O	O	O	O
	OP36-CADCAM	-	-	-	Δ	Δ
	OP37-WoodAux	Δ	Δ	Δ	Δ	Δ
	OP43-LabelCutFunction	O	Δ	Δ	Δ	Δ
	OP51-OPCUA	Δ	Δ	Δ	Δ	Δ

Class	Item	O~Standard   Δ~Optional   --~Not Available				
		FC-60PA	*FC-60CA	*FC-60CB	FC-60WA	FC-600WA
Servo	Protocal	M3/EtherCAT	Pulse	M3/EtherCAT	M3/EtherCAT	M3/EtherCAT
Function Optiona	OP57-WoodCentral	Δ	Δ	Δ	Δ	Δ
	OP59-Tangential Control	-	Δ	Δ	Δ	Δ
	OP60- DataBase	-	-	-	-	-
	PLC / PTP Axes	O/-	-	O/-	O/-	O
	Multi-Main System Group	-	-	-	O	O
	Tool Length/Diad. Comp.	-	O/-	O/-	O	O
	VNC server	-	-	-	-	-
	Remote Support	-	-	-	-	-
	ZPL printer	O	O	O	O	O
	Panel Redo/Nest	-	-	-	-	-

# Controller Model Spec

O~Standard    Δ~Optional    --~Not Available					
Class	Item	*60W-E	60PE	610WA-H/610WB-H	610MA-E5
伺服控制	Protocol	M3/EtherCAT	M3/EtherCAT	M3/EtherCAT	M3/EtherCAT
Software	Standard Axes(Optional)	4(6)	4(18)	8(9)/12(18)	8(18)
	Max. Axes Group	4	2	4	4
	Max. Spindle	5	0	6	6
	Tool / Coordinate Number	96/32	-/32	200/100	200/100
	BPT	600	600	3000	2000
Hardware	RJ-45	1	1	1	1
	RS-485	1	1	1	1
	USB	2	2	2	2
	I/O	32/32	32/32	32/32	32/32
	DA/MPG	2/1	2/1	2/1	2/1
	Monotor	8" Standard	10.4" Touch	VGA	10.4" /15" Standard/Touc
	DiskC/DiskA	256M/4G	4G/4G	4G/4G	4G/4G
Function Optional	OP5-PC-CNC	O	O	O	O
	OP12-RTCP	-	-	-	Δ
	OP16-SYNTEC Vision	Δ	Δ	Δ	Δ
	OP27-Multi-5-Axes Chain	-	-	-	Δ
	OP29-4Axes RTCP	Δ	-	Δ	O
	OP30-5Axes	-	-	Δ	O
	OP32-ROT	O	-	O	O
	OP36-CADCAM	-	Δ	Δ	-
	OP37-WoodAux	Δ	Δ	Δ	-
	OP43-LabelCutFunction	Δ	O	O	-
	OP51-OPCUA	Δ	Δ	Δ	Δ



		O~Standard   Δ~Optional   ~Not Available			
Class	Item	*60W-E	60PE	610WA-H/610WB-H	610MA-E5
Servo	Protocal	M3/EtherCAT	M3/EtherCAT	M3/EtherCAT	M3/EtherCAT
Function Optional	OP57-WoodCentral	Δ	Δ	Δ	-
	OP59-Tangential Control	Δ	-	-	Δ
	OP60- DataBase	-	-	-	-
	PLC / PTP Axes	O/-	O/-	O	O
	Multi-Main System Group	O	-	O	O
	Tool Length/Diad. Comp.	O	-	O	O
	VNC server	-	-	-	-
	Remote Support	-	-	-	-
	ZPL printer	O	O	O	-
	Panel Redo/Nest	-	-	-	-

h/VGA





## 台灣地區

### 新竹 台灣總公司

新代科技股份有限公司  
地址：新竹市東區研發二路25號  
電話：+886-3-6663553  
傳真：+886-3-6663505  
E-mail：sales@syntecclub.com.tw

### 台灣營業處

聯達智能股份有限公司(中區分公司)  
地址：台中市南屯區精科三路二號  
電話：+886-4-23550621  
傳真：+886-4-23550622

新代科技股份有限公司(南區分公司)  
地址：高雄市楠梓區卓越路2之1號 I302室  
電話：+886-7-6011000#7808

### 經銷商

華勝自動化有限公司  
地址：台中市豐原區豐原大道一段428巷22弄90號  
電話：+886-4-25337731  
傳真：+886-4-25349224

項儒實業有限公司  
地址：台中市精明路42號  
電話：+886-4-23102626  
傳真：+886-4-23102636

鴻繪自動化科技有限公司  
地址：台南市仁德區太子五街22巷5號  
電話：+886-6-2796707  
傳真：+886-6-2796705

## 大陸地區

### 江蘇

蘇州新代數控設備有限公司  
地址：江蘇省蘇州工業園區春輝路9號新代科技園B棟  
電話：0512-69008860  
傳真：0512-65246029

新代科技(蘇州)有限公司南京分公司常州辦事處  
地址：常州市武進區湖塘鎮花園街1號亞泰財富中心2217室  
電話：18168828572

新代科技(蘇州)有限公司徐州分公司  
地址：江蘇省徐州市經濟開發區觀龍路66號領海辦公樓南-1503室新代科技  
電話：13656201020

新代科技(蘇州)有限公司南京分公司  
地址：南京市江寧區蘇源大道117號兩港園區1號科研樓712室  
電話：025-52717702  
傳真：025-52717710

新代科技(蘇州)有限公司南通分公司  
地址：南通市北大街108號金城商業中心1棟1301室  
電話：0513-89077025  
傳真：0513-89072057

新代科技(蘇州)有限公司鹽城辦事處  
地址：江蘇省鹽城市鹽都區中南世紀城9期13幢401室  
電話：18625235150

### 陝西

新代科技(蘇州)有限公司西安分公司  
地址：西安市高新區唐延南路10號逸翠園I都會4幢1-1328  
電話：029-88287423  
傳真：029-88287423

新代科技(蘇州)有限公司陝西寶雞辦事處  
地址：寶雞市金台區濱河北路東嶺新時代8號樓三單元1702室  
電話：18629153277

## 世界各地

### 馬來西亞

MYSYNTEC TECHNOLOGY SDN BHD  
地址：16, Jalan Astana 1F, Bandar Bukit Raja, 41050 Klang, Selangor, Malaysia.  
電話：+603-3311-5887  
E-mail：sales.malaysia@syntecclub.com

### 泰國

SYNTEC Thailand Office  
地址：78/38 Kheha Romkiao Rd., Khlong Song Ton Nun, Lat Krabang, Bangkok, 10520  
電話：+662-006-5738  
E-mail：thanawat@syntecclub.com.tw

### 越南

SYNTEC VIET NAM TECHNOLOGY CO., LTD  
地址：No. 18, A4 Street, Ward 12, Tan Binh District, Ho Chi Minh City, Viet Nam  
電話：+84 938332829  
傳真：+84 282 253 5556  
E-mail：andyngo@syntecclub.com.tw

### 印度

SYNTEC TECHNOLOGY INDIA PVT.LTD  
地址：Champaka building, P-6C, 2nd floor, peenya industrial area Near peenya police station Bangalore-560058  
電話：+91-9916146577  
E-mail：raghavendra.naik@syntecclub.com

### 土耳其

SYNTEC TEKNOLOJİ LTD (Istanbul)  
地址：Küçükbakkalköy Mah. Vedat Günyol Cd. Defne Sok. No:1 D:1502 Flora Residence, 34750 Atasehir/Istanbul, Türkiye  
電話：+90-216-2662475  
E-mail：info@syntec-turkey.com

### 美國

USA SYNTEC ECHNOLOGY, INC (South California)  
地址：2841 Saturn St, #D, Brea, CA 92821  
電話：+1 909-551-0187  
E-mail：info@syntecamerica.com

### 韓國

AISYNTECH (Service Partner)  
地址：Ruko Arcadia Mataram Blok B, No 15, Kelurahan Cibatu, 312Ho 103Dong 88, Sinwon-ro, Yeongtong-gu, Suwon-si, Gyeonggi-do, 16681, Rep. of KOREA  
電話：+82 70-8615-1134  
E-mail：thetechtv100@gmail.com

### 廣東

蘇州新代數控設備有限公司廣東分公司  
地址：廣州市南沙區珠江街南江三路10號A棟201-301廠  
電話：020-39089367  
傳真：020-39089791

新代科技(蘇州)有限公司東莞分公司  
地址：廣東省東莞市長安鎮振安東路522號大哥大集團1樓3樓B區  
電話：0769-81660318  
傳真：0769-81660328

新代科技(蘇州)有限公司廣州分公司  
地址：廣東省廣州市番禺區石基鎮富怡路羅家村段8號之七2樓404室  
電話：020-34583040  
傳真：020-34583220

新代科技(蘇州)有限公司常平分公司  
地址：東莞市常平鎮板石村前一路8號匯隆大廈5樓  
電話：0769-82826802  
傳真：0769-82826820

新代科技(蘇州)有限公司深圳分公司  
地址：深圳市坪山區龍田街道竹坑社區青蘭一路8號泰威新材料工業園E座406  
電話：0755-84320380  
傳真：0755-84559490

新代科技(蘇州)有限公司江門分公司  
地址：廣東省江門市江海區金區路288號高新區火炬大廈7樓02室  
電話：0750-3762143

### 河南

新代科技(蘇州)有限公司洛陽分公司  
地址：河南洛陽高新區河洛路與三山路交叉口潤升大廈704  
電話：0379-65110352  
傳真：0379-65110352

新代科技(蘇州)有限公司天津分公司石家莊辦事處  
地址：河北省石家莊市橋西區華星路8號熱一社區4-3-801  
電話：18622728669

### 福建

新代科技(蘇州)有限公司廈門分公司  
地址：廈門市同安區新民鎮集祥西路2號3樓  
電話：0592-7191901  
傳真：0592-7220536

### 浙江

新代科技(蘇州)有限公司杭州分公司  
地址：杭州市蕭山區金城路471號帝凱大廈1幢二單元1202  
電話：0571-82751187  
傳真：0571-82751186

新代科技(蘇州)有限公司金華辦事處  
地址：浙江省金華市婺城區新獅街道東市北街1729號G204室  
電話：1599-0026533

新代科技(蘇州)有限公司溫州分公司  
地址：浙江省溫州市藍海區宏海大廈1205-3  
電話：0577-86158619

新代科技(蘇州)有限公司寧波分公司  
地址：寧波市江東區朝暉路416弄262號(常青藤辦公樓)1207  
電話：0574-87750305  
傳真：0574-87750306

新代科技(蘇州)有限公司溫嶺分公司  
地址：浙江省台州市溫嶺市城東街道萬昌中路838號聚成服務業大廈509室  
電話：0576-86138372  
傳真：0576-86119106

新代科技(蘇州)有限公司玉環辦事處  
地址：浙江省台州市玉環縣楚門鎮226省道華龍時代廣場1幢2單元302室  
電話：13088636567

### 重慶

新代科技(蘇州)有限公司重慶分公司  
地址：重慶市渝北區泰山大道東段62號4幢1007(動力國際D座1007)  
電話：023-67913296  
傳真：023-67634382

新代科技(蘇州)有限公司四川辦事處  
地址：成都市雙流區東升街道星空路二段898號 佳兆業現代城24棟1單元102(商業辦公公寓)  
電話：18302886229

### 天津

新代科技(蘇州)有限公司天津分公司  
地址：天津市西青區外環西路7號構瑞豐花園A區37號  
電話：022-23739192

### 山東

新代科技(蘇州)有限公司濟南分公司  
地址：濟南天橋區三孔橋街28號魯能康橋11號樓3單元502  
電話：0531-85907208  
傳真：0531-85905708

新代科技(蘇州)有限公司青島辦事處  
地址：青島市城陽區天山一路今日紫都14號樓二單元1004室  
電話：18663779803

新代科技(蘇州)有限公司滕州辦事處  
地址：山東省滕州市北辛街道育才路社區小康村1排13戶  
電話：15098706233

### 湖北

新代科技(蘇州)有限公司武漢分公司  
地址：武漢市洪山區珞瑜路456號佳園路光谷國際A座2003-2006  
電話：027-87638876  
傳真：027-87204137

### 遼寧

新代科技(蘇州)有限公司瀋陽分公司  
地址：遼寧省瀋陽市鐵西區建設西路17號天鑫大廈1212室  
電話：18698806526

### 安徽

新代科技(蘇州)有限公司合肥分公司  
地址：安徽省合肥市濱湖融創茂萬達銀座B座1005  
電話：0551-63814183  
傳真：0551-63814183

**SYNTEC**  
新代科技股份有限公司

新代科技股份有限公司  
SYNTEC Technology Co.,Ltd.  
台灣新竹市東區研發二路25號

☎ 886-3-6663553  
☎ 886-3-6663505  
✉ sales@syntecclub.com.tw

新代科技(蘇州)有限公司  
Suzhou SYNTEC Equipment Co.,Ltd.  
江蘇省蘇州工業園區春輝路9號

☎ 86-512-69008860  
☎ 86-512-65246029  
✉ service@syntecclub.com.cn

新代科技官網

聯達智能官網

